

## COMPUTER INTERFACE - ON LINE / OFF LINE VERSION FOR EVERY APPLICATION

LEETRON LEETRON LEETRON LEETRON LEETRON LEETRON LEETRON LEETRON LEETRON LEETRON LEETRON LEETRON LEETRON

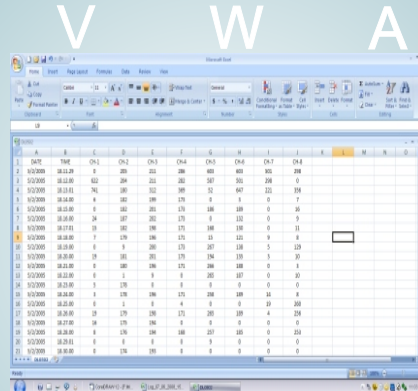
### APPLICATION

### NUMERICAL

### FEATURES

$\mu\text{M}$   $\emptyset$  ppm

PROCESS PLANTS / INDUSTRIES  
SCIENTIFIC RESEARCH & DEV.. LABS.  
INDUSTRIAL AUTOMATION  
CHEMICAL FERTILIZER  
PHARMACEUTICALS PLASTIC,RUBBER,  
TEXTILE,HEAT TREATMENT,FOUNDRY,  
STEEL, METALLURGICAL, CEMENT,  
PAPER, AUTOMOBILE, ELECTRICAL  
INDUSTRIES



pH  $\mu\text{S}$  ppr

Custom Made Design & Development.  
Application base Algorithm,Equation etc.  
Sensor configuration & signal conditioner.  
Input- All process, measurement parameters.  
Sensor inputs-Factory programmable.  
Current Data display on Computer monitor.  
Data Transfer to Computer for Graphs & Listing.  
Online Trend monitoring in Computer.  
Both On-line and Off-line Computer versions.  
Substitute for conventional Graphic Recorder.  
Easy to install and operate for analysis of data.

LEETRON

$\text{Kg/cm}^2$

LEETRON

KWhr

LEETRON

mmWC

### ONLINE DISPLAY

### HARDWARE

### ONLINE GRAPHIC

gm lb  $\text{M}\Omega$

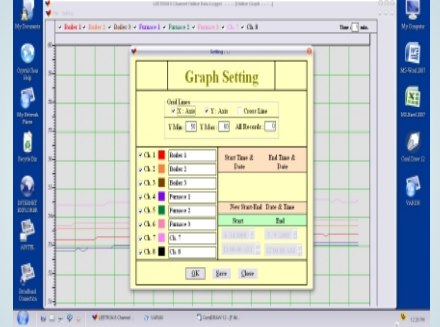
LEETRON SYSTEMS, DELHI

01 TEMP FURNACE 235	05 SPEED MOTOR 360
02 PRES BOILER 100	06 REDOX ACID 225
03 FLOW LIQUID 120	07 COND LIQUID 880
04 LEVEL TANK 505	08 HUMID AIR 056

DC090608.DAT 127 10:54:30



Kg  $\text{m}^3$  Hz



LEETRON

Kgcm

LEETRON

Kpa

### SOFTWARE

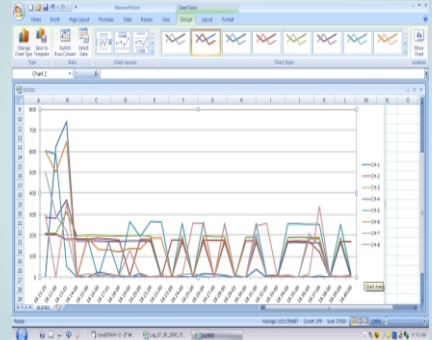
### GRAPHICAL

### SPECIFICATIONS

Sec dB inHg

- Window platform : Win XP
- Language : Visual Basic
- Graph & Numeric Data : MS-Excel
- Data Transfer : USB port, RS 232 port
- Data file format : Auto format Date-Time
- Data Listing : Date,Time,Ch-1,---,Ch-8.
- Data Graph : Parameter Vs Date-Time
- Online Graph Trend : X-Y axis programmable
- Online Display : Current Data
- System Configuration : Pentium,USB/Sr port, CD-ROM

mA  $^{\circ}\text{C}$  mV



Min  $^{\circ}\text{F}$  PSI

- No of channel : 1/2/3/6/8
- Input Sensor : T/C, RTD, mV, mA, pulse
- Scan Time : 01 - 60 sec/min.
- Memory : 2000 Records(expandable)
- Processor : Atmel Micro-controller
- Time base : Real Time Quartz base
- A/D Converter : 12/16 bit resolution
- Graph Trend : Online/Offline
- PC Interface : RS 232 / USB Port
- Software : WinXP,MS-EXCEL
- Data file : Auto format Date & Time
- Power : 220 Vac 50Hz / 12 V dc

LEETRON

%RH

LEETRON

LPM

LEETRON

RPM

## CONSULTANCY - PROJECTS - INDUSTRIAL AUTOMATION - PROCESS CONTROL - TEST & MEASURE - SCIENTIFIC - SAFETY & SECURITY - CAL.

LEETRON LEETRON LEETRON LEETRON LEETRON LEETRON LEETRON LEETRON LEETRON LEETRON LEETRON LEETRON LEETRON

Note : The contents / details shown are for various options and subject to differ / change without prior notice.